

MOD / NATO Disposals

ilitary vehicles and equipment for sale

www.modsurplus.co.uk

Tel: +44 (0)1302-954007

[Return to Homepage](#) | E-Mail: sales@modsurplus.co.uk



REQUEST A QUOTE

or call us on UK +44(0)1302-954007

Description / Ref

Grove 315M 4x4 all terrain 18 ton crane - 11728

Photo (a gallery of photos is provided below - where available)



Details

Grove 315M 4x4 all terrain cranes.
Rebuilt by Grove in 1997.
Upgraded to 3 section jib.
Max load of 18,000kg
PAT weigh load system
RHD carrier, can be driven from crane operators cabin.
Condition is excellent - ex reserve stocks.

Videos (if available)



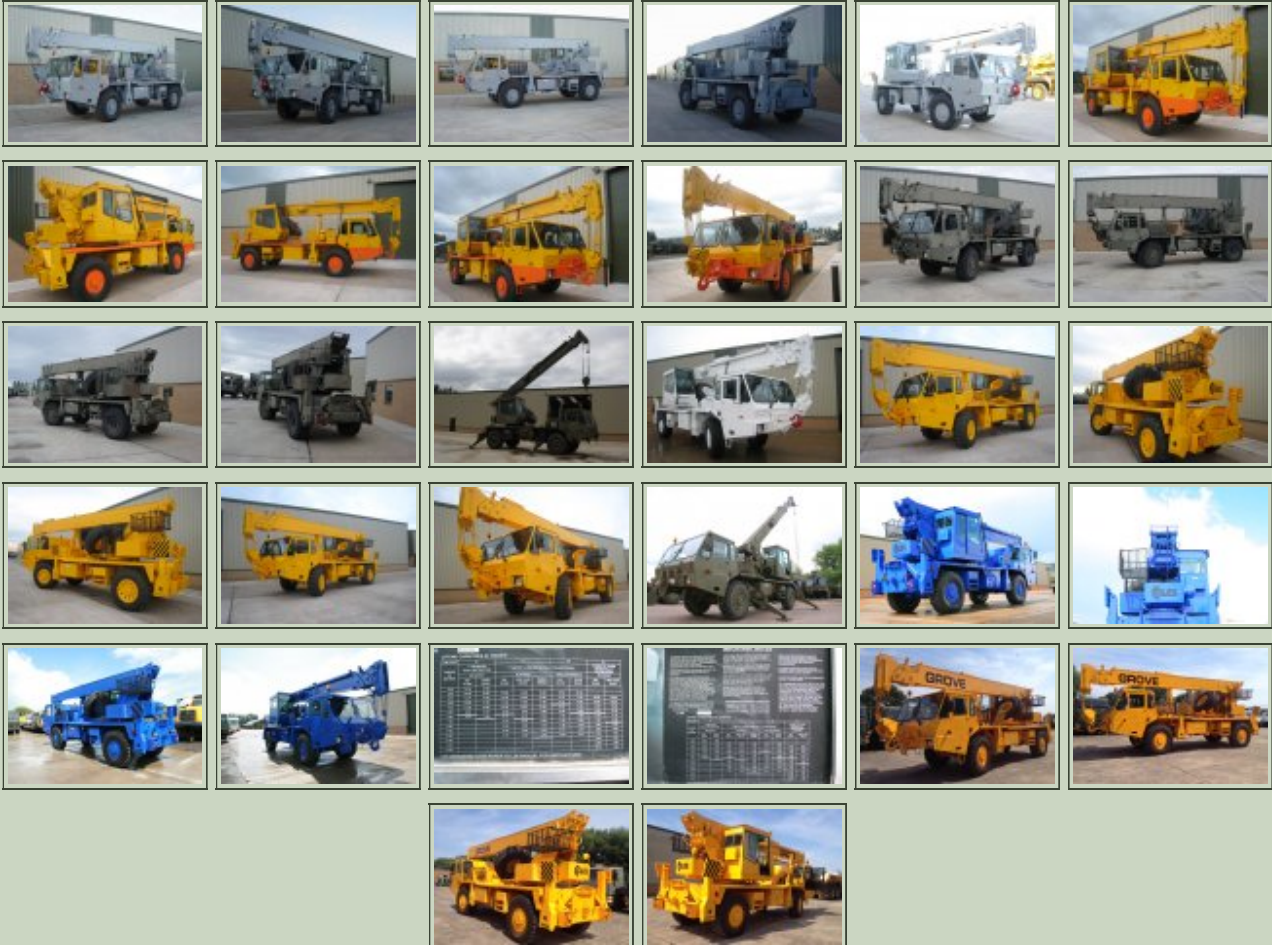
Category	Cranes	Length	10.0m
Manufacturer	Grove	Height	3.60m
Engine	Cummins V555C diesel engine 196HP	Width	2.50m
Gearbox	Alison power shift automatic	GVW	22,000kg
Brakes	Air over hydraulic	Hrs_Kms	400 - 1,500hrs
Steering	PAS - RHD	Date into Service	1995
Tyres	16.00 x R20	Year of Manufacture	
Max Load	18,000kg	Qty Available	15
Electrics	24 volt	Export Requirements ...more	OGEL/SIEL Licence Required



REQUEST A QUOTE

or call us on UK +44(0)1302-954007

Photo Gallery



■
All prices qoted are GBP U.K. Pounds Sterling Ex. Works excluding VAT where applicable and shipping / associated costs.

■
Vehicles advertised are subject to remaining unsold.

■
All prices quoted are based on "**per individual unit**" purchased, any reductions on advertised price for multiple item orders is subject to negotiation and is conducted at the time of inspection or provision of LOI.

■
Photo's shown above may represent a vehicle type rather than an actual vehicle, vehicles are available serviced and painted to customers preference

■
An export licence may be required for items sold to customers outside of the U.K.
FOR MORE INFORMATION ON EXPORT LICENCING PROCEDURES

[CLICK HERE](#)

FOR INFORMATION ON CURRENT EU EMBARGOES

[CLICK HERE](#)