

MOD / NATO Disposals

ilitary vehicles and equipment for sale

www.modsurplus.co.uk

Tel: +44 (0)1302-954007

[Return to Homepage](#) | E-Mail: sales@modsurplus.co.uk



REQUEST A QUOTE

or call us on UK +44(0)1302-954007

Description / Ref

Oshkosh M1070 Tractor Units - 40125

Photo (a gallery of photos is provided below - where available)



Details

The Heavy Equipment Transporter System (HETS) transport were used by the military to carry tanks and other heavy tracked and wheeled vehicles when combined with the M1000 semi-trailer.

These trucks are perfect for use in the civilian role of heavy transport for companies who need to move outside loads or heavy plant

Outstanding condition and ultra low mileage from just 500 miles only.

[Download Spec](#)

These heavy movers can also be equipped with twist locks, ballast boxes, in line linkage for moving exceptionally heavy loads.

Can also be supplied with a Jeep Dolly if required (see gallery below for photos)

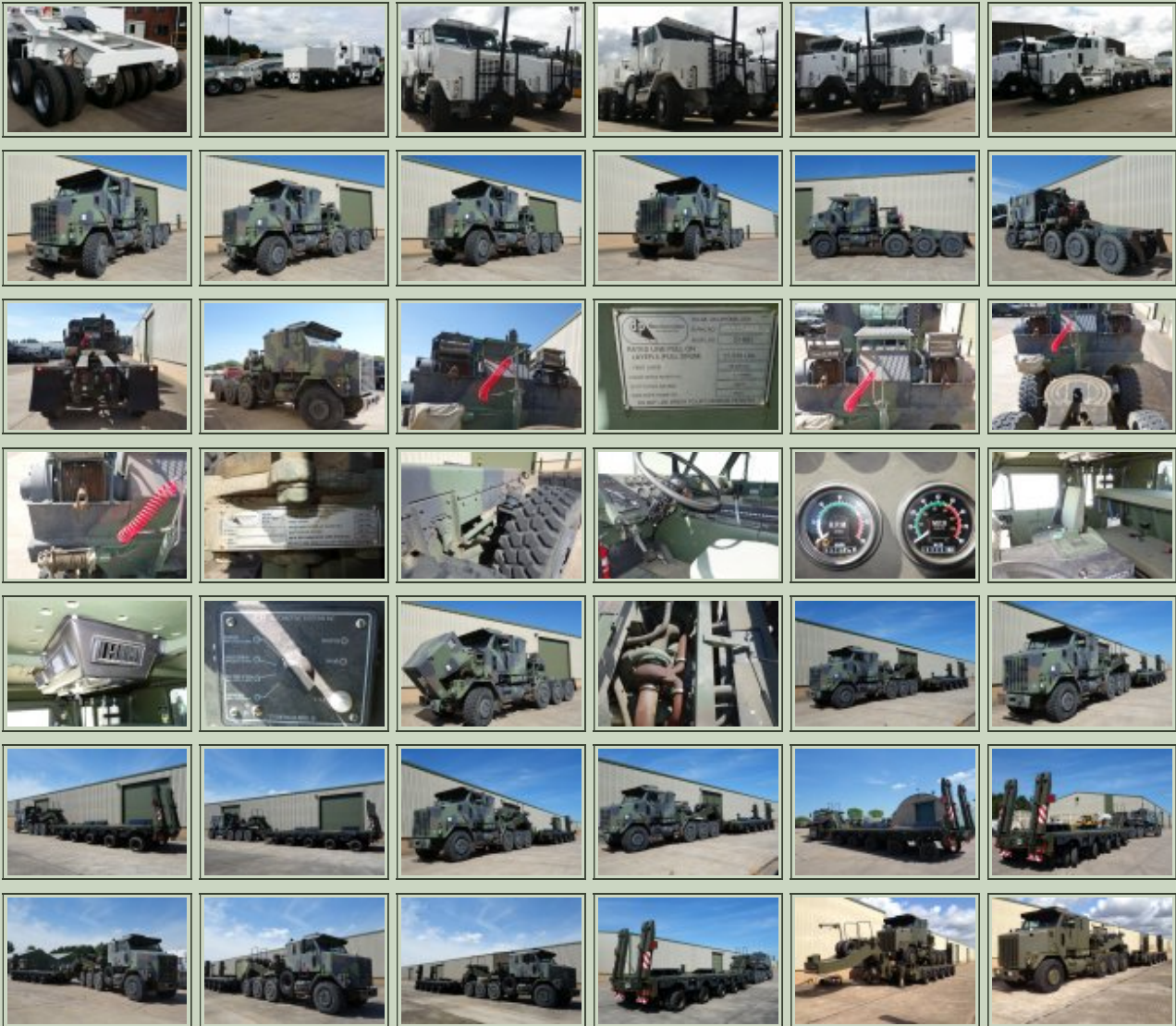
Videos (if available)			
Category	Tractor Trucks	Length	9.1M
Manufacturer	Oshkosh	Height	3.4M
Engine	Detroit Diesel, 8V92TA	Width	2.6M
Gearbox	Allison CLT-754	GVW	86,000 lb
Brakes	Dual Air, Spring Brakes on Axles 2, 3, 4	Hrs_Kms	1,000 - 5,000 kms
Steering	PAS LHD	Date into Service	
Tyres	16.00R20	Year of Manufacture	
Max Load	See Spec	Qty Available	20
Electrics		Export Requirements ...more	SIEL Licence Required



REQUEST A QUOTE

or call us on UK +44(0)1302-954007

Photo Gallery



■
All prices qoted are GBP U.K. Pounds Sterling Ex. Works excluding VAT where applicable and shipping / associated costs.

■
Vehicles advertised are subject to remaining unsold.

■
All prices quoted are based on "**per individual unit**" purchased, any reductions on advertised price for multiple item orders is subject to negotiation and is conducted at the time of inspection or provision of LOI.

■
Photo's shown above may represent a vehicle type rather than an actual vehicle, vehicles are available serviced and painted to customers preference

■
An export licence may be required for items sold to customers outside of the U.K.
FOR MORE INFORMATION ON EXPORT LICENCING PROCEDURES

[CLICK HERE](#)

FOR INFORMATION ON CURRENT EU EMBARGOES

[CLICK HERE](#)