

# MOD / NATO Disposals

ilitary vehicles and equipment for sale

[www.modsurplus.co.uk](http://www.modsurplus.co.uk)

Tel: +44 (0)1302-954007

[Return to Homepage](#) | E-Mail: [sales@modsurplus.co.uk](mailto:sales@modsurplus.co.uk)



REQUEST A QUOTE

or call us on UK +44(0)1302-954007

## Description / Ref

Grove 315M 4x4 All Terrain 18 Ton Crane - 50175

Photo (a gallery of photos is provided below - *where available*)



## Details

Grove 315M 4x4 all terrain 18 ton crane

Direct from military reserve stock in excellent condition with only 720 hours

Upgraded to 3 section jib

Max load of 18,000kg

PAT weigh load system

RHD carrier, can be driven from crane operators cabin.

## Videos (if available)



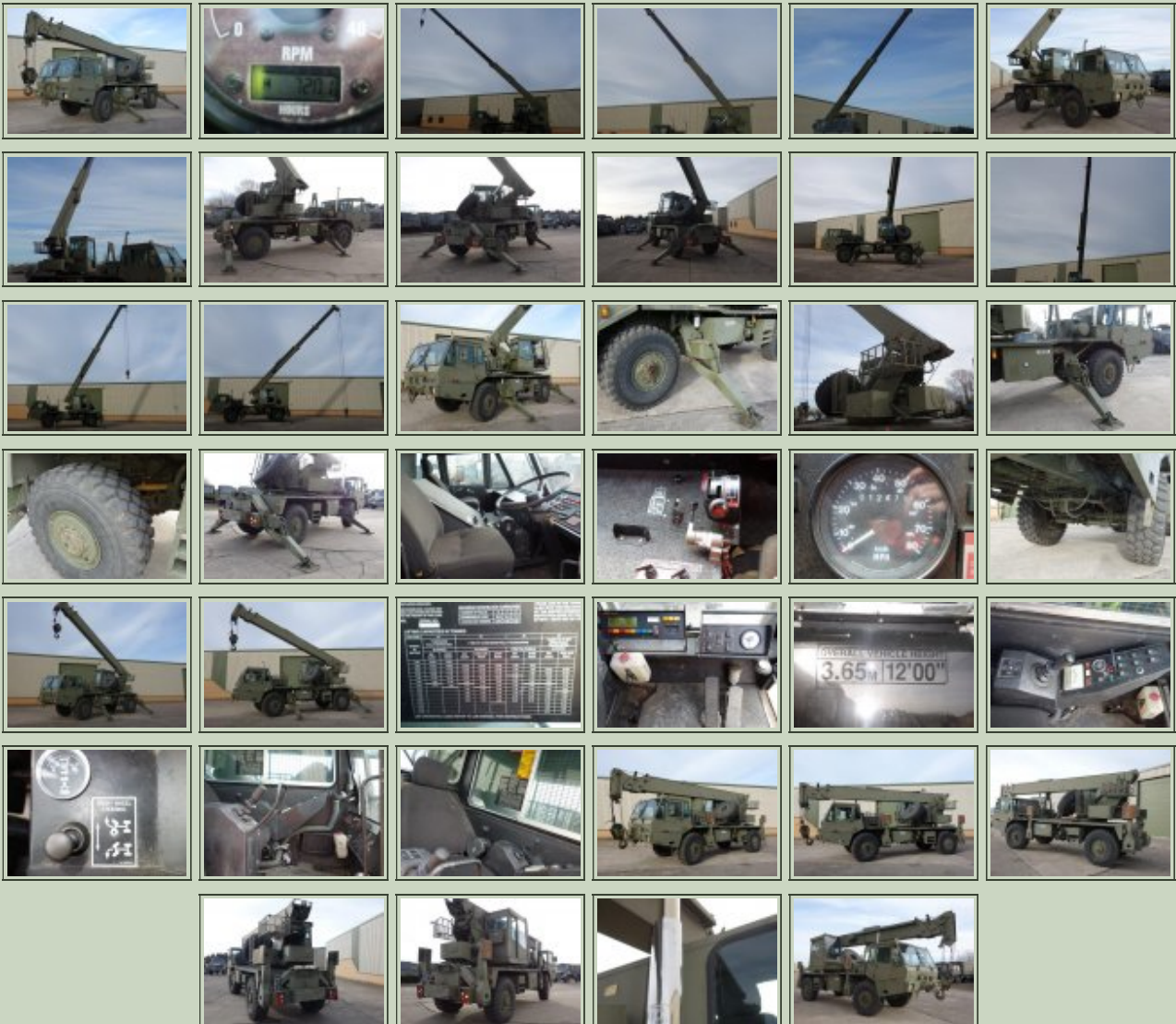
Category	Cranes	Length	10M
Manufacturer	Grove	Height	3.6M
Engine	Cummins V555C diesel engine 196HP	Width	2.5M
Gearbox	Alison power shift automatic	GVW	22,000 Kg
Brakes	Air over hydraulic	Hrs_Kms	12,000 Km's
Steering	PAS - RHD	Date into Service	
Tyres	16.00R20	Year of Manufacture	
Max Load	18,000 Kg's	Qty Available	1
Electrics	24V	Export Requirements <a href="#">...more</a>	SIEL Licence Required




**REQUEST A QUOTE**

or call us on UK +44(0)1302-954007

### Photo Gallery





■  
All prices qoted are GBP U.K. Pounds Sterling Ex. Works excluding VAT where applicable and shipping / associated costs.

■  
Vehicles advertised are subject to remaining unsold.

■  
All prices quoted are based on "**per individual unit**" purchased, any reductions on advertised price for multiple item orders is subject to negotiation and is conducted at the time of inspection or provision of LOI.

■  
Photo's shown above may represent a vehicle type rather than an actual vehicle, vehicles are available serviced and painted to customers preference

■  
An export licence may be required for items sold to customers outside of the U.K.

**FOR MORE INFORMATION ON EXPORT LICENCING PROCEDURES**

**[CLICK HERE](#)**

**FOR INFORMATION ON CURRENT EU EMBARGOES**

**[CLICK HERE](#)**